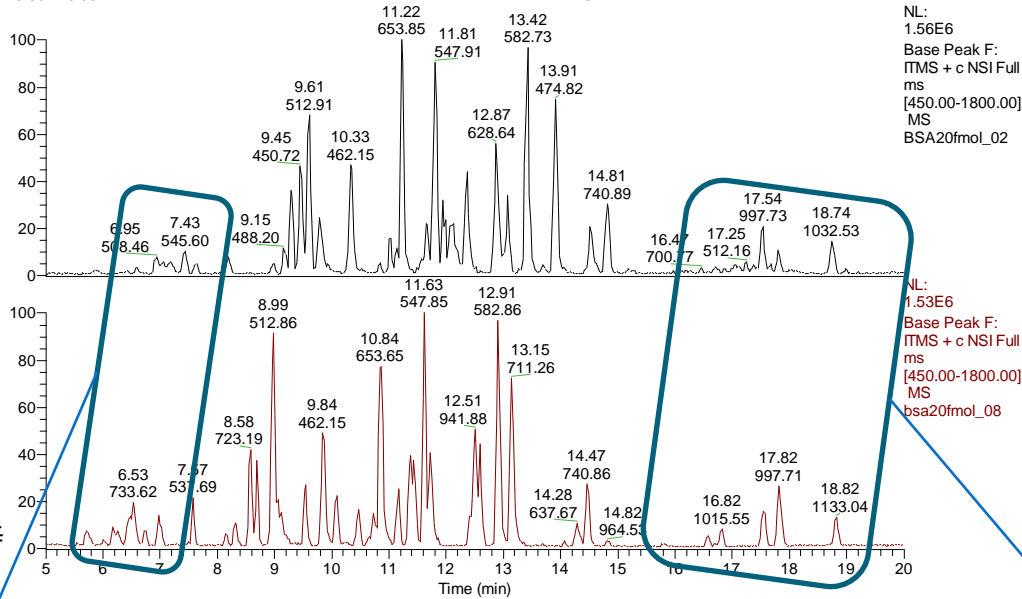


AMRカラムオーブンの効果

Base Peak Chromatogram – BSA 20fmol

RT: 5.00 - 20.00



NL: 1.56E6
Base Peak F:
ITMS + c NSI Full
ms
[450.00-1800.00]
MS
BSA20fmol_02

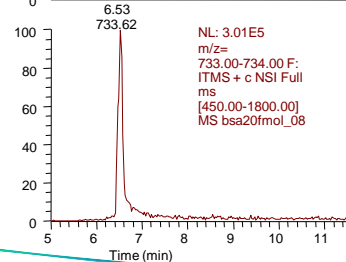
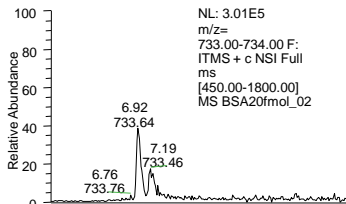
NL: 1.53E6
Base Peak F:
ITMS + c NSI Full
ms
[450.00-1800.00]
MS
bsa20fmol_08

1. Column oven なし
Spray Voltage; 1.8kV
圧力(5%B送液時); 2400psi

2. Column oven あり (60C)
Spray Voltage; 1.6kV
圧力(5%B送液時); 1850psi

分離、
ピーク形状改善

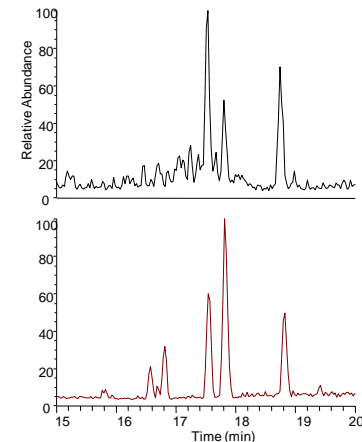
汚れの溶出



Database search

Database; SwissProt
Modification;
fixed; Carboxymethyl (Cys)
variable; Oxidation (Met)
Ion score cut off <0.05

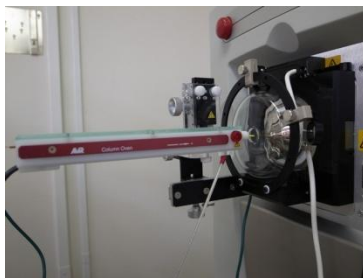
	Score	Match	Seq.	Coverage (%)
1	1118	64 (64)	35 (35)	57
2	1333	71 (71)	37 (37)	61



分析条件等

使用機器

- 質量分析計
Finnigan LTQ (Thermo Fisher Scientific)
- オートサンプラー
HTS-PAL (CTC Analytics)
- HPLC
Advance Nano UHPLC
(Michrom BioResources)
- Trap
L-trap 5um, 0.3mmID x 5mm (CERI)
- Column
L-column C18 3u 12nm 0.1mmID x 150mm
(CERI)
- Ion Source
XYZ Nano ESI interface (AMR)
Fortis Tip 150/20 (AMR)
- Column Oven
ColumnOvenCOV150
(AMR)



分析条件

HPLC

- Solvent A 0.1% Formic acid aq.
- Solvent B 100% Acetonitrile
- Gradient rate
5%B(0min)-45%B(20min)-
95%B(21min)-95%B(24min)
-5%B(25min)-5%B(35min)
- Flow rate 500nl/min
- Sample BSA100fmol/uL
- Injection vol. 0.2uL

MS

- Polarity Positive mode
- Scan mode Full Scan MS
-Data dependent MS/MS
- Scan Range m/z 450-1800
(Full Scan)