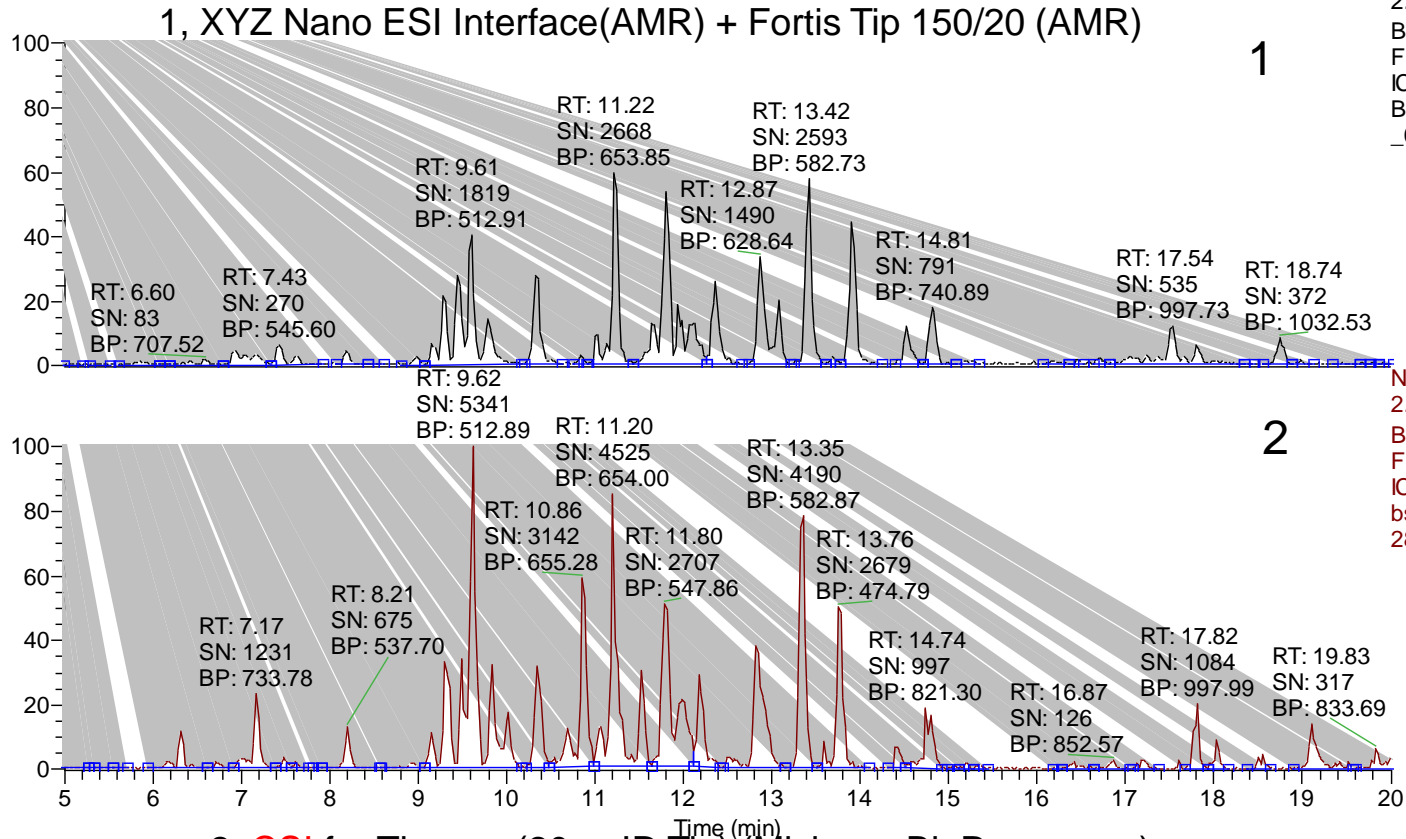


# Captive Sprayイオンソース(CSI)の効果

## Base Peak Chromatogram

RT: 5.00 - 20.00



NL:  
2.62E6  
Base Peak  
F: ms MS  
ICIS  
BSA20fmol  
\_02

NL:  
2.62E6  
Base Peak  
F: ms MS  
ICIS  
bsa20fmol\_  
28

## 分析条件等

### 使用機器

- 質量分析計  
Finnigan LTQ (Thermo Fisher Scientific)
- オートサンプラー  
HTS-PAL (CTC Analytics)
- HPLC  
Advance Nano UHPLC  
(Michrom BioResources)
- Trap  
L-trap 5um, 0.3mmID x 5mm (CERI)
- Column  
L-column C18 3u 12nm 0.1mmID x 150mm  
(CERI)

### 分析条件

#### HPLC

- Solvent A 0.1% Formic acid aq.
- Solvent B 100% Acetonitrile
- Gradient rate  
5%B(0min)-45%B(20min)-  
95%B(21min)-95%B(24min)  
-5%B(25min)-5%B(35min)
- Flow rate 500nl/min
- Sample BSA100fmol/uL
- Injection vol. 0.2uL (BSA 20fmol相当)

#### MS

- Polarity Positive mode
- Scan mode Full Scan MS  
-Data dependent MS/MS
- Scan Range *m/z* 450-1800  
(Full Scan)